

BUILDING: AP HOUSE OF THE WEEK EXTRA

Instant classic:
the grand exterior suits this
house perfectly for
a historic neighborhood.

A formal library

FOR AP WEEKLY FEATURES

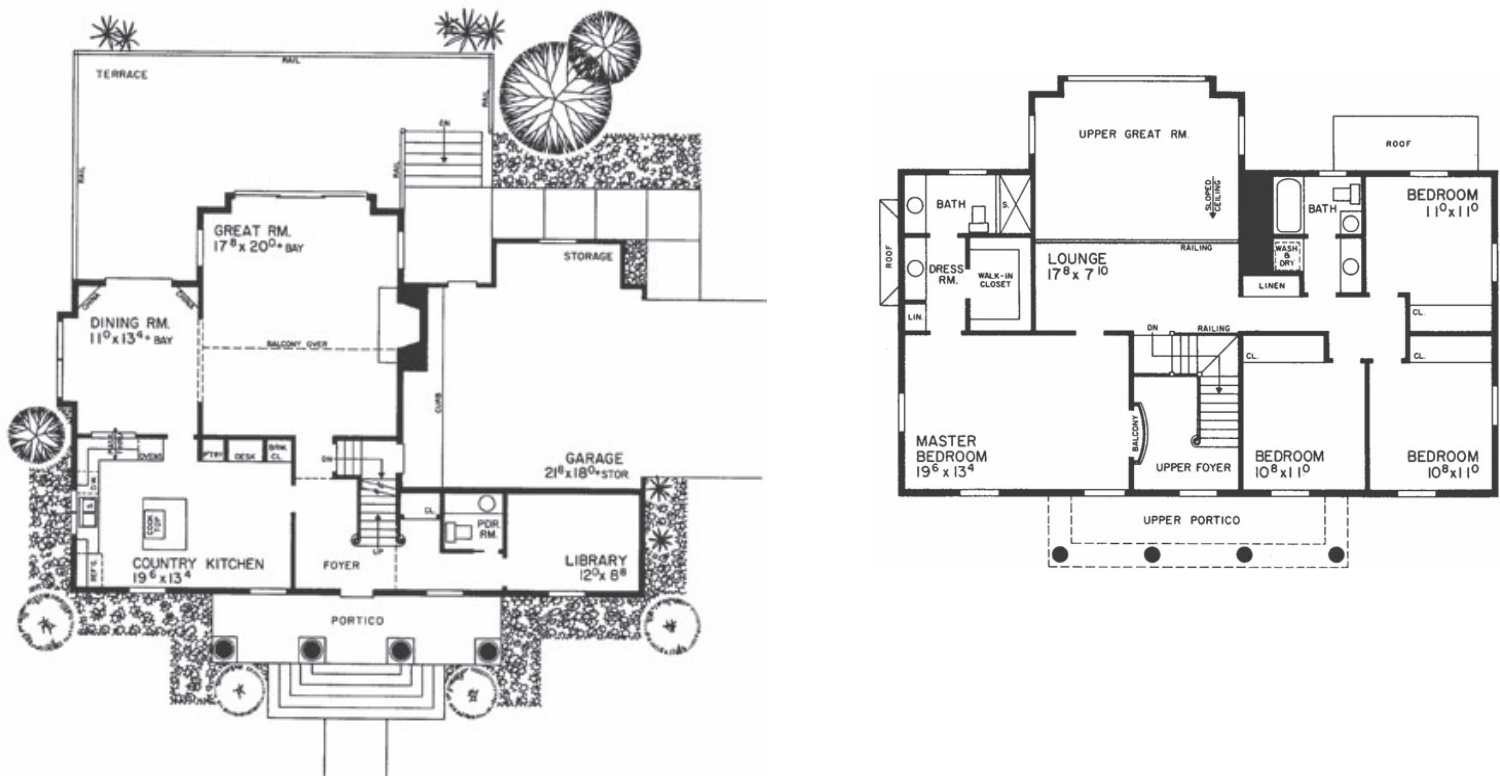
Clapboards, a center entrance, and symmetrically placed shuttered windows give a distinctly Georgian ambiance to Plan HMAFAPW00251 from Homeplans.com, until a Greek Revival portico with four soaring columns and a pediment is added. Based on the Roberts-Vaughan House, built in North Carolina in 1790, this design sneaks in some modern features, like a sideentry garage and generous country kitchen.

The historic design features 2,460 square feet on two levels. Inside, the library offers a quiet retreat to the right of the foyer. To the left waits the kitchen with plenty of room for a table, an island cooktop, and a pass-through to the dining room.

Between the pantry and the broom closet is a built-in desk, handy for checking email, looking up recipes, or paying bills.

The Great Room is outstanding, with a high ceiling, a wall of windows, and a fireplace.

Upstairs, the master suite includes a balcony overlooking the foyer and a bath with twin vanities and a walk-in closet. Laundry facilities are on this floor, as are a lounge and three family bedrooms sharing a full bath.



Order information

To receive the Study Plan for this home, order by phone, online, or by mail. By phone: Call (866) 772-1013. Reference the plan number. Online: Go to www.houseoftheweek.com and type the plan number into the field labeled "Enter Plan #." The downloadable study plans are available for \$10. By mail: Send a check or money order for \$10 payable to House of the Week. Mail to: Hanley Wood, 3275 W. Ina Rd., Suite 260, Tucson, AZ, 85741

A two-story Great Room is warmed by a fireplace and features an expansive wall of windows with access to the backyard deck, which is perfect for warm-weather entertaining.

DESIGN DETAILS FOR PLAN HMAFAPW00251

Bedrooms: 4
Baths: 2-1/2 baths
Upper floor: 1,254 sq. ft.
Main floor: 1,206 sq. ft.
Total living area: 2,460 sq. ft.

Garage: 429 sq. ft.
Exterior wall framing: 2x6
Foundation options: Standard basement