

BUILDING: AP HOUSE OF THE WEEK



A high ceiling and warm fireplace in the Great Room provide extra charm at the heart of this home. Split bedrooms provide privacy for guests and a full basement offers space for expansion.

Create a New Tradition

THE ASSOCIATED PRESS

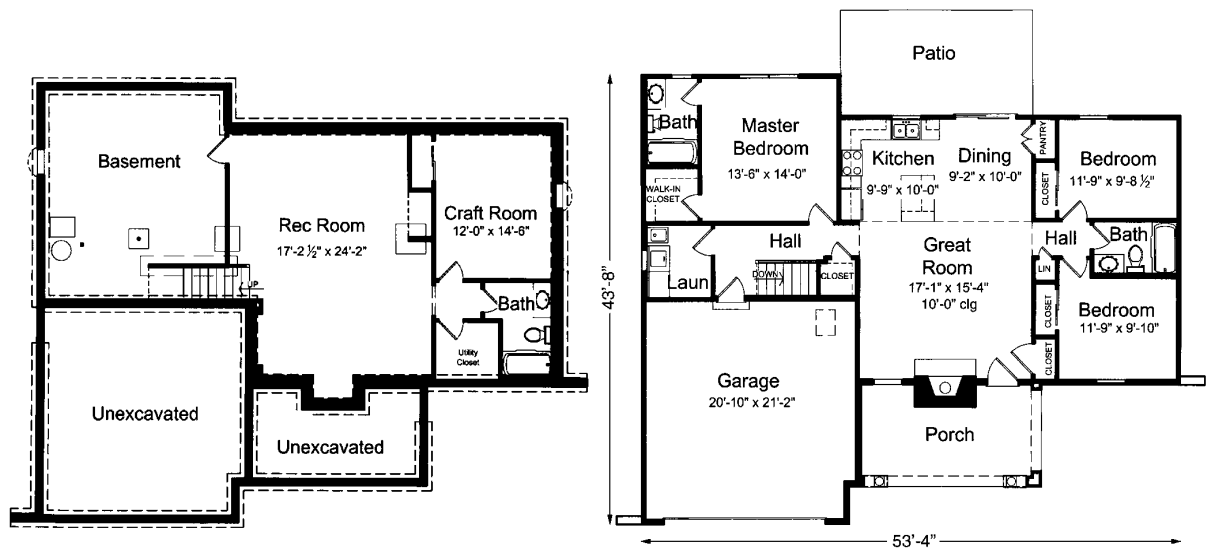
This home, Plan SRD-516 by Home Plans LLC, offers a rustic traditional style perfect for any neighborhood. The floor plan covers 1,285 square feet.

The kitchen, dining nook and Great Room flow into each other, creating a large, open entertaining space. A grand fireplace highlights the Great Room. An island with a snack bar defines the kitchen, which also boasts a nearby pantry and direct access to a rear patio.

Split bedrooms offer privacy to guests and the quiet master suite features a walk-in closet and a practical private bath.

A full basement provides storage or can be finished for additional living space. Plans include specs for a rec room, craft room and another bath.

The cottage style and efficient footprint make this design a perfect choice for your vacation home.



The rustic traditional style of this home fit into any neighborhood, but would be especially perfect in a vacation setting.

PLAN SRD-516 DESIGN DETAILS

Bedrooms: 3

Baths: 2

Main floor: 1,285 sq. ft.

Total living area: 1,285 sq. ft.

Standard basement: 1,285 sq. ft.

Garage: 433 sq. ft.

Exterior wall framing: 2" x 4"

Foundation options: Standard basement

Order information

A downloadable study plan of this house, including general information on building costs and financing, is available at www.houseoftheweek.com. To receive a study plan by mail, send \$10 to House of the Week, 901 N. 3rd St., Minneapolis, MN 55401, or call (866) 772-1013. Be sure to reference the plan number. To view hundreds of home designs, visit our Web site at www.houseoftheweek.com.