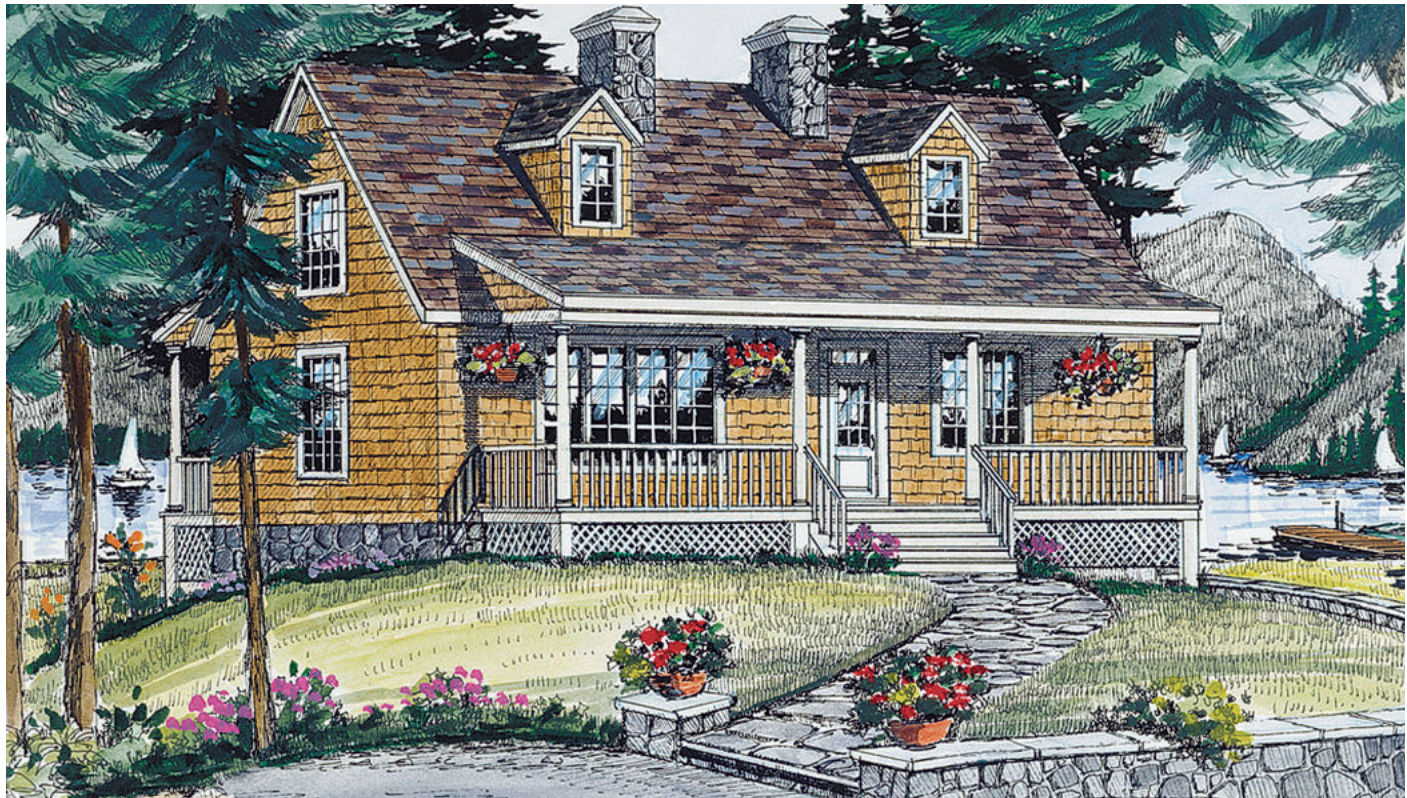


BUILDING: AP HOUSE OF THE WEEK EXTRA

Twin dormers and chimneys give this cute country home a charming crown.



Spacious economy

FOR AP WEEKLY FEATURES

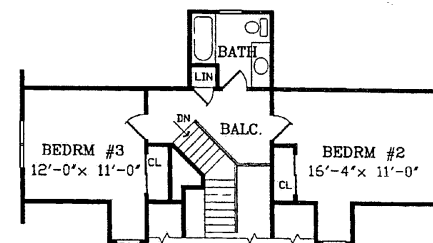
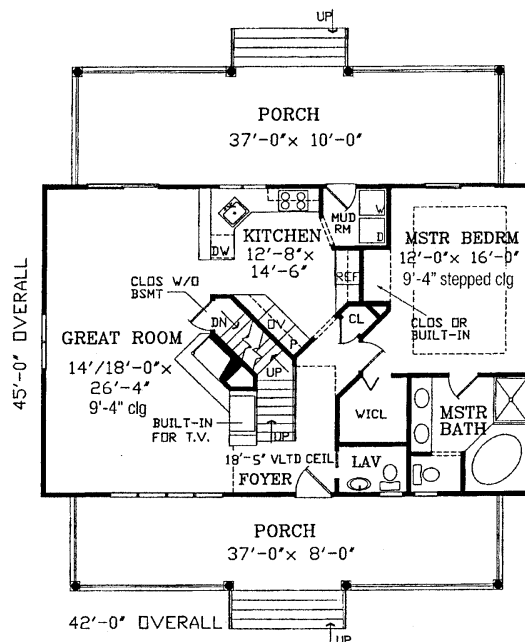
This economical country cottage, Plan AX-94322, by Home Plans LLC, features wide, angled spaces and high ceilings in both the Great Room and the master bedroom for roomy appeal and year-round comfort. The floor plan covers 1,679 square feet of living space.

The Great Room boasts a cozy fireplace with a raised hearth and a built-in niche for a TV, making this room perfect for winter gatherings. On warm nights, a breezy porch at the rear can be accessed through sliding glass doors.

Amenities in the luxurious master suite include a stepped ceiling, a large walk-in closet and a private bath with a dual-sink vanity, a corner garden tub and a separate shower.

The good-sized kitchen offers a handy pantry and a nearby mudroom with laundry facilities and porch access. A serving bar is perfect for casual dining and relaxed conversation.

On the upper floor, a pair of spacious secondary bedrooms flank the balcony and a shared hall bath.



Whether you're craving a friendly place to meet neighbors or a spot to relax alone with a good book, this home's two porches have got you covered. Spacious enough to accommodate a group, yet cozy enough to maintain desired intimacy, you'll find yourself heading outdoors more and more!

Order information

To receive the Study Plan for this home, order by phone, online, or by mail. By phone: Call (866) 772-1013. Reference the plan number. Online: Go to www.houseoftheweek.com and type the plan number into the field labeled "Enter Plan #." The downloadable study plans are available for \$10. By mail: Send a check or money order for \$10 payable to House of the Week. Mail to: House of the Week, 901 N. 3rd St., Suite 216, Minneapolis, MN 55401

DESIGN DETAILS FOR PLAN AX-94322

Bedrooms: 3

Baths: 2 1/2

Upper floor: 545 sq. ft.

Main floor: 1,134 sq. ft.

Daylight basement: 618 sq. ft.

Standard basement: 1,134 sq. ft.

Total living area: 1,679 sq. ft.

Tuck-under garage: 516 sq. ft.

Exterior wall framing: 2x4

Foundation options: Daylight basement, Standard basement, Crawlspace, Slab